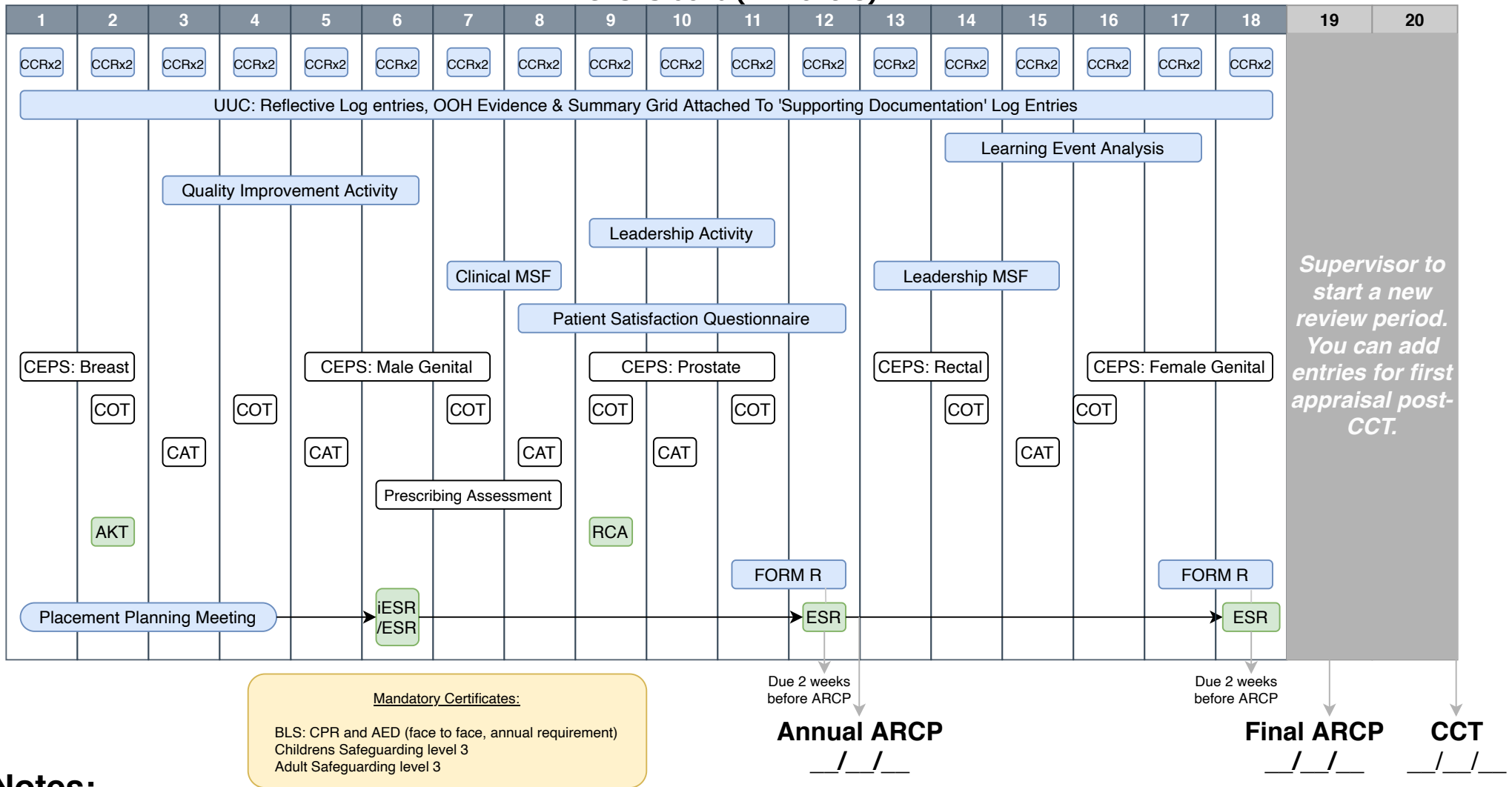


GPST3 60% (in months)



Supervisor to start a new review period. You can add entries for first appraisal post-CCT.

Notes:

These are the **minimum mandatory requirements** for WPBAs and log entries.

The roadmap above shows a recommendation of how to spread your Portfolio entries through your ST3 'year'. Mandatory CEPS may have already been achieved in earlier years.

- Exams AKT/RCA: Please discuss with your education team and ES and agree together the best time for you to sit.
- PDPs: Should be done throughout the year, start PDPs from your first PPM and review PDPs at each ESR, then collaboratively decide on further PDPs.
- COT: accept both COTs or audio-COTs
- CCR: total of 36 over the year, remember to include safeguarding case reflections on adult and child
- If you have undertaken any work outside of training, record it on your Form R and fill in a 'reflection of work outside of training' form and attach it
- ESR: due 2 weeks before ARCP Panel, but not more than 6 weeks before ARCP panel date. For your first ESR there is an option of completing an iESR if applicable.
- CEPS: female genital - must include part a & b, which is cervix visualisation and bimanual examination
- Safeguarding: besides completing children and adult safeguarding level 3 training you will need reflections on safeguarding in action for children and adult every 'year'. 12 months after completing level 3 training, you will then need annual updates on safeguarding for adult and children (see RCGP website).



Health Education England
Working Across Wessex